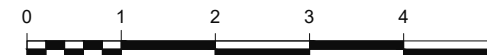
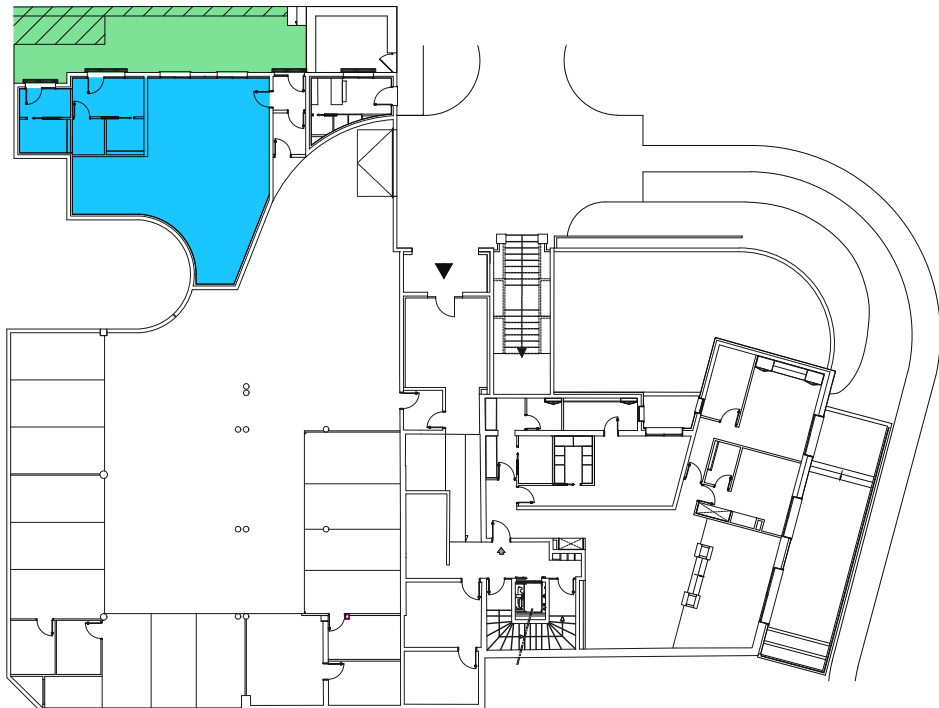
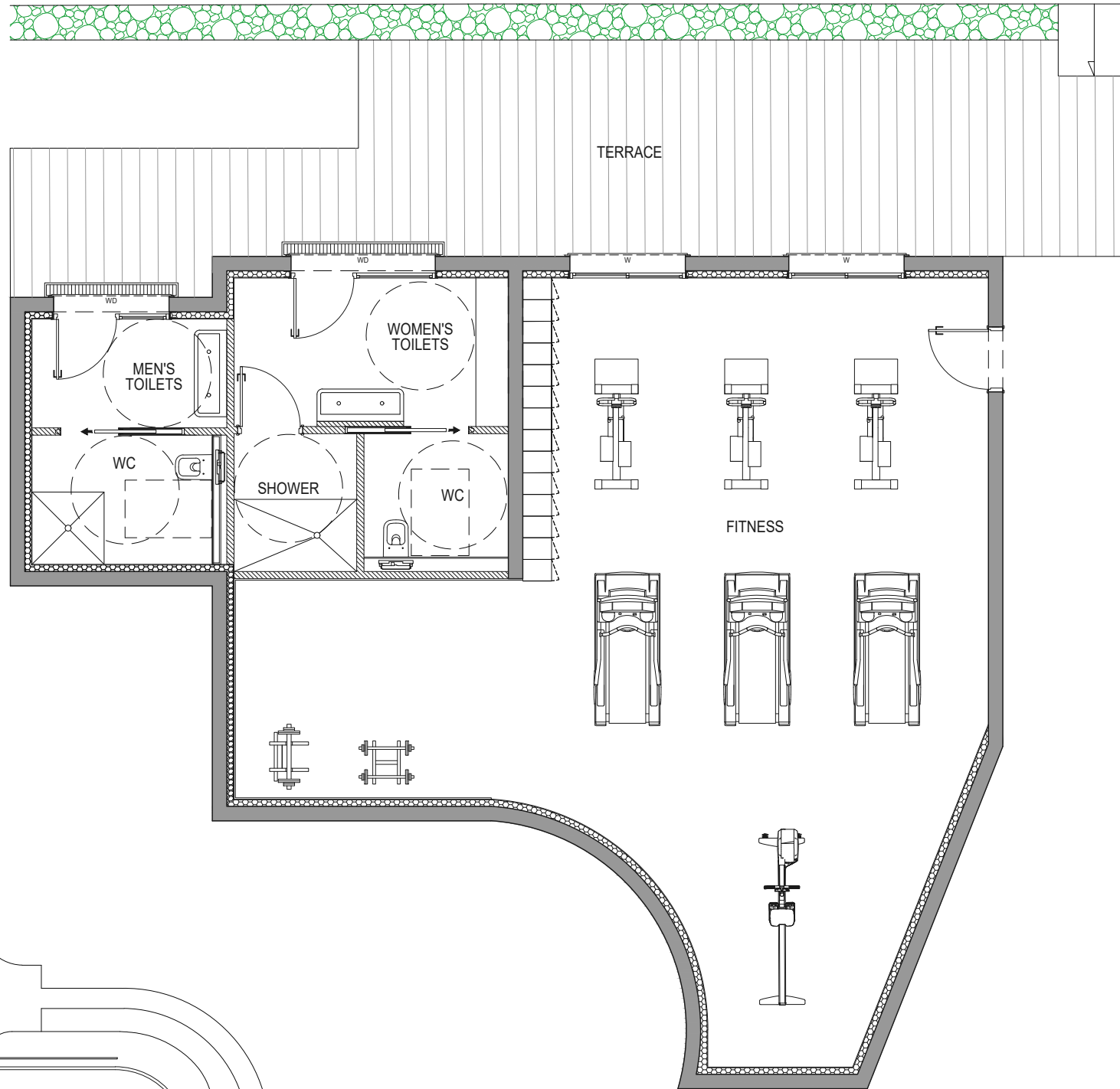


12/09/2023

W : Window  
WD : Window Door



959, Boulevard de la Garoupe  
06160 Antibes

## Fitness Garden Floor

Interior area

| Level               | Room      | Sqm                        |
|---------------------|-----------|----------------------------|
| <b>Ground Floor</b> |           |                            |
|                     | FITNESS   | 71.00 m <sup>2</sup>       |
|                     | W TOILETS | 14.65 m <sup>2</sup>       |
|                     | M TOILETS | 8.65 m <sup>2</sup>        |
|                     |           | <b>94.30 m<sup>2</sup></b> |

Exterior area

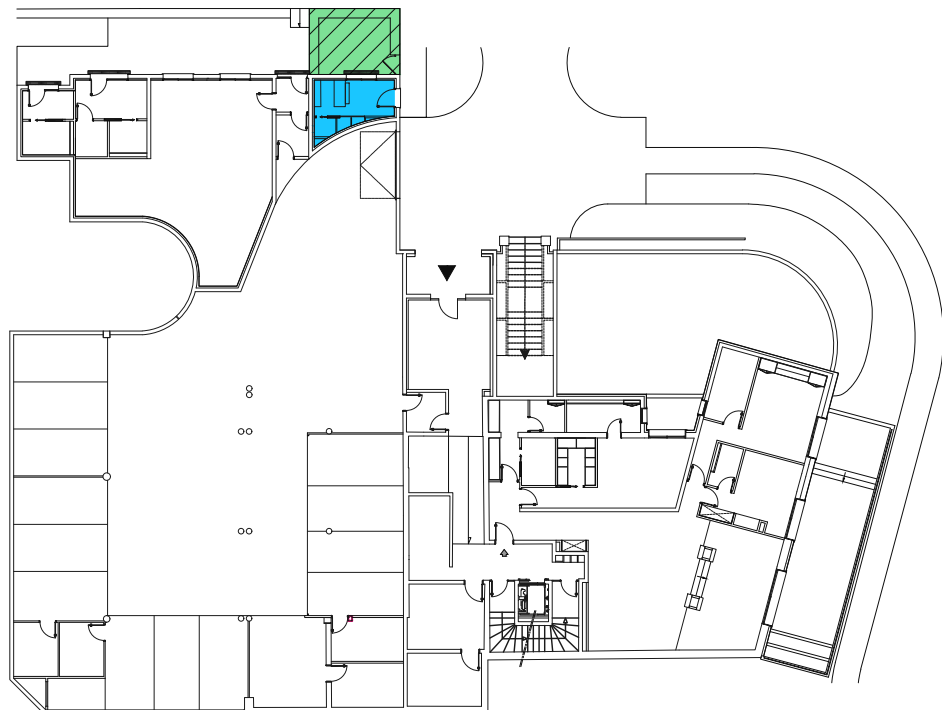
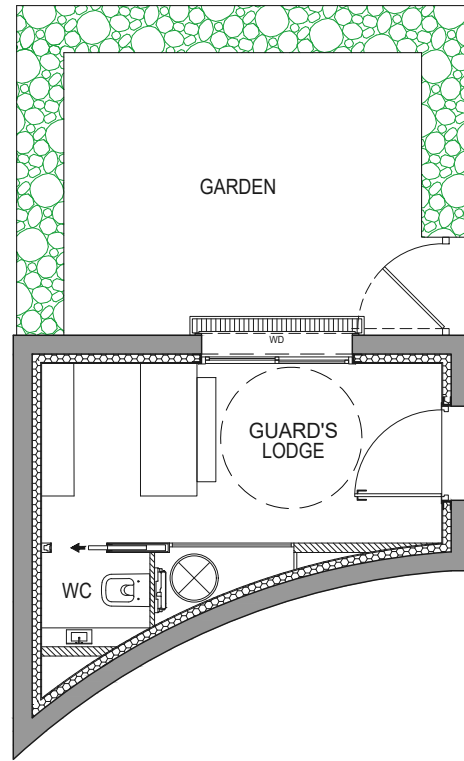
| Level               | Room    | Sqm                        |
|---------------------|---------|----------------------------|
| <b>Ground Floor</b> |         |                            |
|                     | TERRACE | 40.40 m <sup>2</sup>       |
|                     | GARDEN  | 14.30 m <sup>2</sup>       |
|                     |         | <b>54.70 m<sup>2</sup></b> |

**NOTA :** The surface of the cupboards is included into the adjoining rooms

The surface areas and descriptions are given only as indications following the inventory report . They will be specified during the work.

12/09/2023

W : Window  
WD : Window Door



959, Boulevard de la Garoupe  
06160 Antibes

## Guard's lodge Garden Floor

### Interior area

| Level               | Room          | Sqm                        |
|---------------------|---------------|----------------------------|
| <b>Ground Floor</b> |               |                            |
|                     | GUARD'S LODGE | 9.00 m <sup>2</sup>        |
|                     | WC            | 1.10 m <sup>2</sup>        |
|                     |               | <b>10.10 m<sup>2</sup></b> |

### Exterior area

| Level               | Room   | Sqm                        |
|---------------------|--------|----------------------------|
| <b>Ground Floor</b> |        |                            |
|                     | GARDEN | 16.80 m <sup>2</sup>       |
|                     |        | <b>16.80 m<sup>2</sup></b> |

**NOTA :** The surface of the cupboards is included into the adjoining rooms

The surface areas and descriptions are given only as indications following the inventory report . They will be specified during the work.