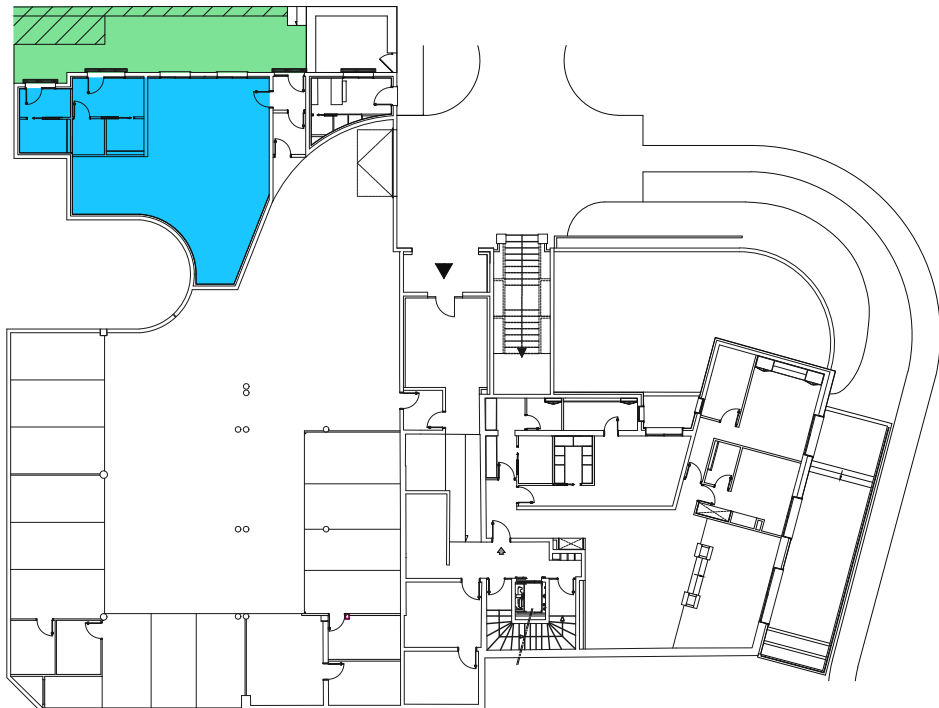
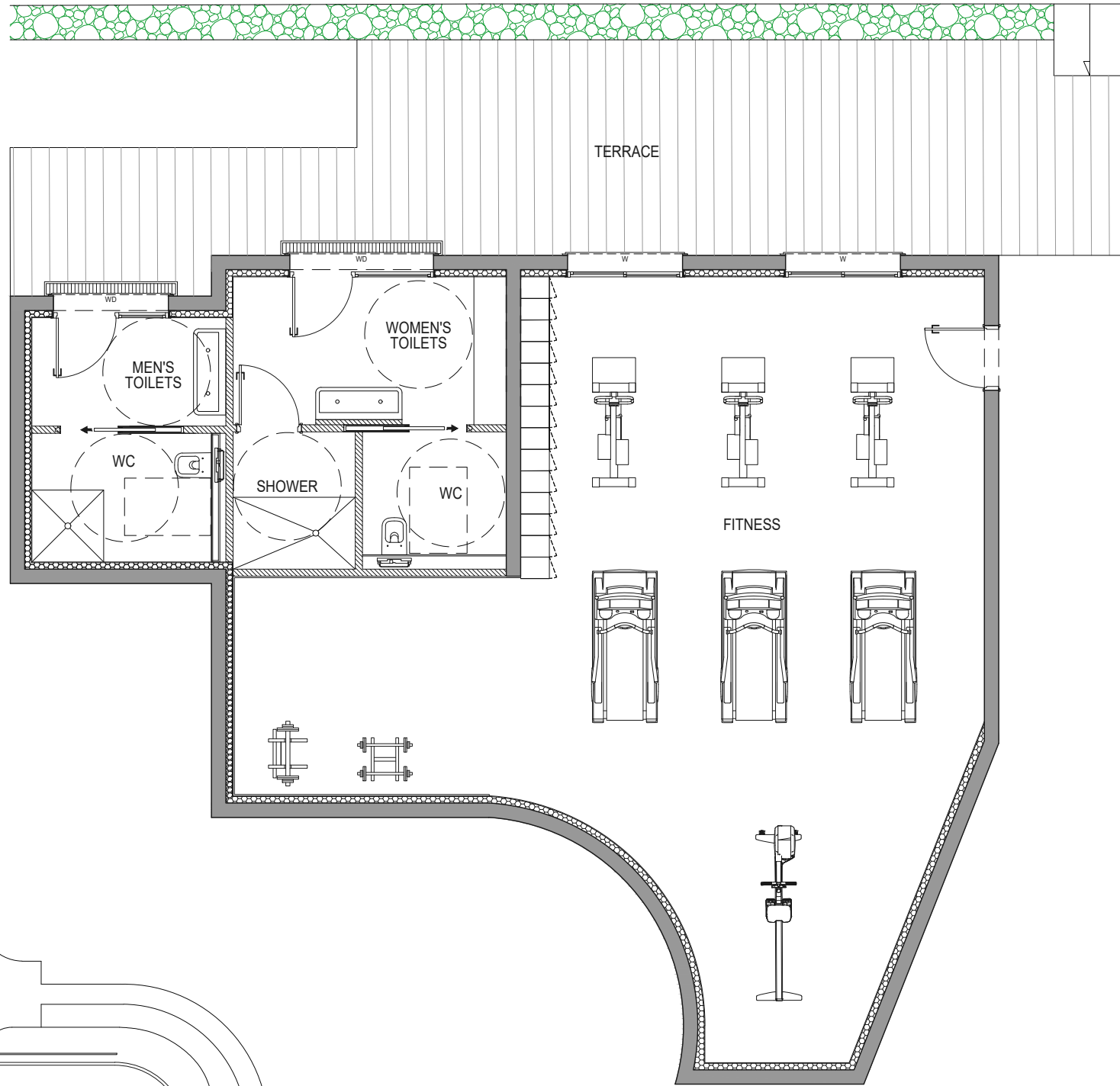


16/02/2023

W : Window  
WD : Window Door



**EDEN GAROUBE**  
Cap D'Antibes

959, Boulevard de la Garoupe  
06160 Antibes

## Fitness Garden Floor

### Interior area

Level	Room	Sqm
<b>Ground Floor</b>		
	FITNESS	71.00 m <sup>2</sup>
	W TOILETS	14.65 m <sup>2</sup>
	M TOILETS	8.65 m <sup>2</sup>
		<b>94.30 m<sup>2</sup></b>

### Exterior area

Level	Room	Sqm
<b>Ground Floor</b>		
	TERRACE	40.40 m <sup>2</sup>
	GARDEN	14.30 m <sup>2</sup>
		<b>54.70 m<sup>2</sup></b>

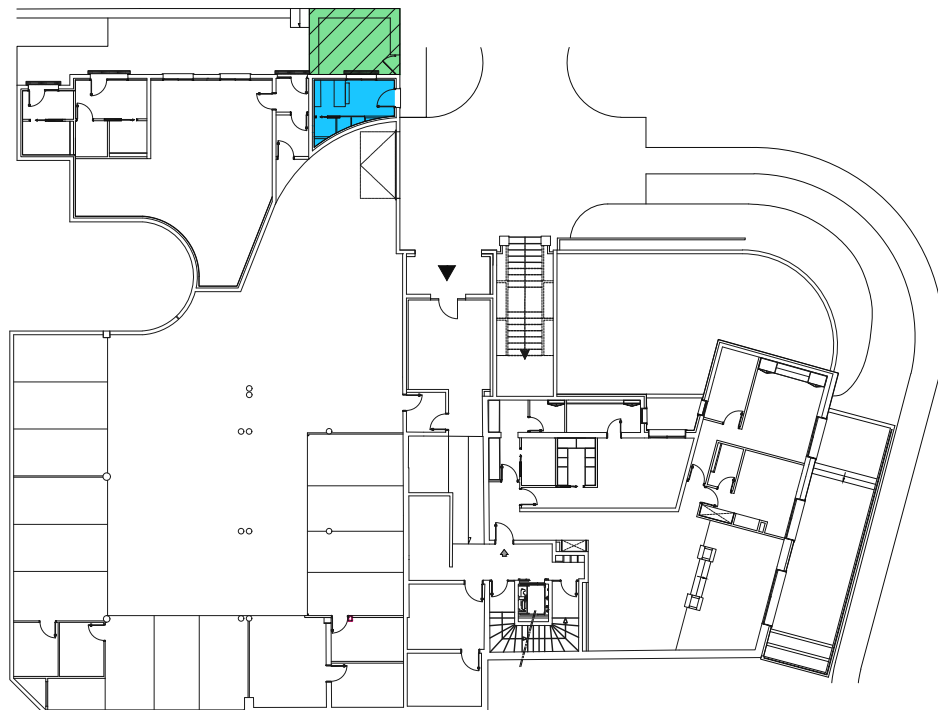
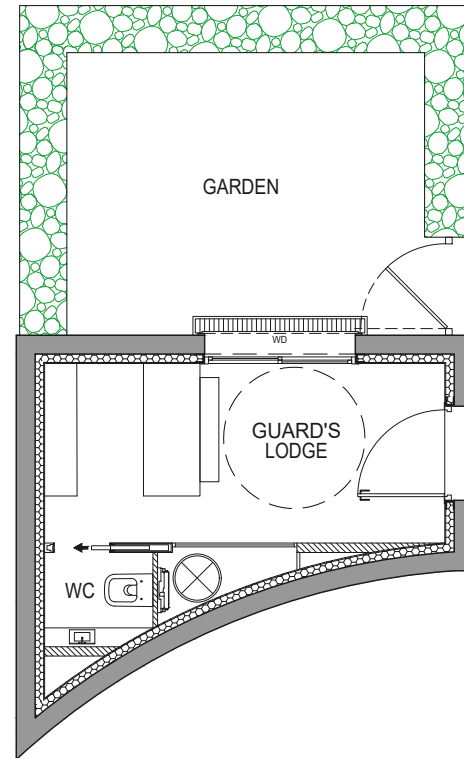
**NOTA :** The surface of the cupboards is included into the adjoining rooms

The surface areas and descriptions are given only as indications following the inventory report . They will be specified during the work.

**BS** | GROUPE  
**INVEST**

16/02/2023

W : Window  
WD : Window Door



959, Boulevard de la Garoupe  
06160 Antibes

## Guard's lodge Garden Floor

### Interior area

Level	Room	Sqm
<b>Ground Floor</b>		
	GUARD'S LODGE	9.00 m <sup>2</sup>
	WC	1.10 m <sup>2</sup>
		<b>10.10 m<sup>2</sup></b>

### Exterior area

Level	Room	Sqm
<b>Ground Floor</b>		
	GARDEN	16.80 m <sup>2</sup>
		<b>16.80 m<sup>2</sup></b>

**NOTA :** The surface of the cupboards is included into the adjoining rooms

The surface areas and descriptions are given only as indications following the inventory report . They will be specified during the work.